

# **JET**

**HBS-1213AF**

**Metal Working Bandsaw**

**HBS-1213AF... 50000434T .... 3~400V, 50Hz**

## **PARTS LIST**

**JPW (Tool) AG.**

Tämperlistrasse 5

CH-8117 Fällanden

Switzerland

Phone +41 44 806 47 48

Fax +41 44 806 47 58



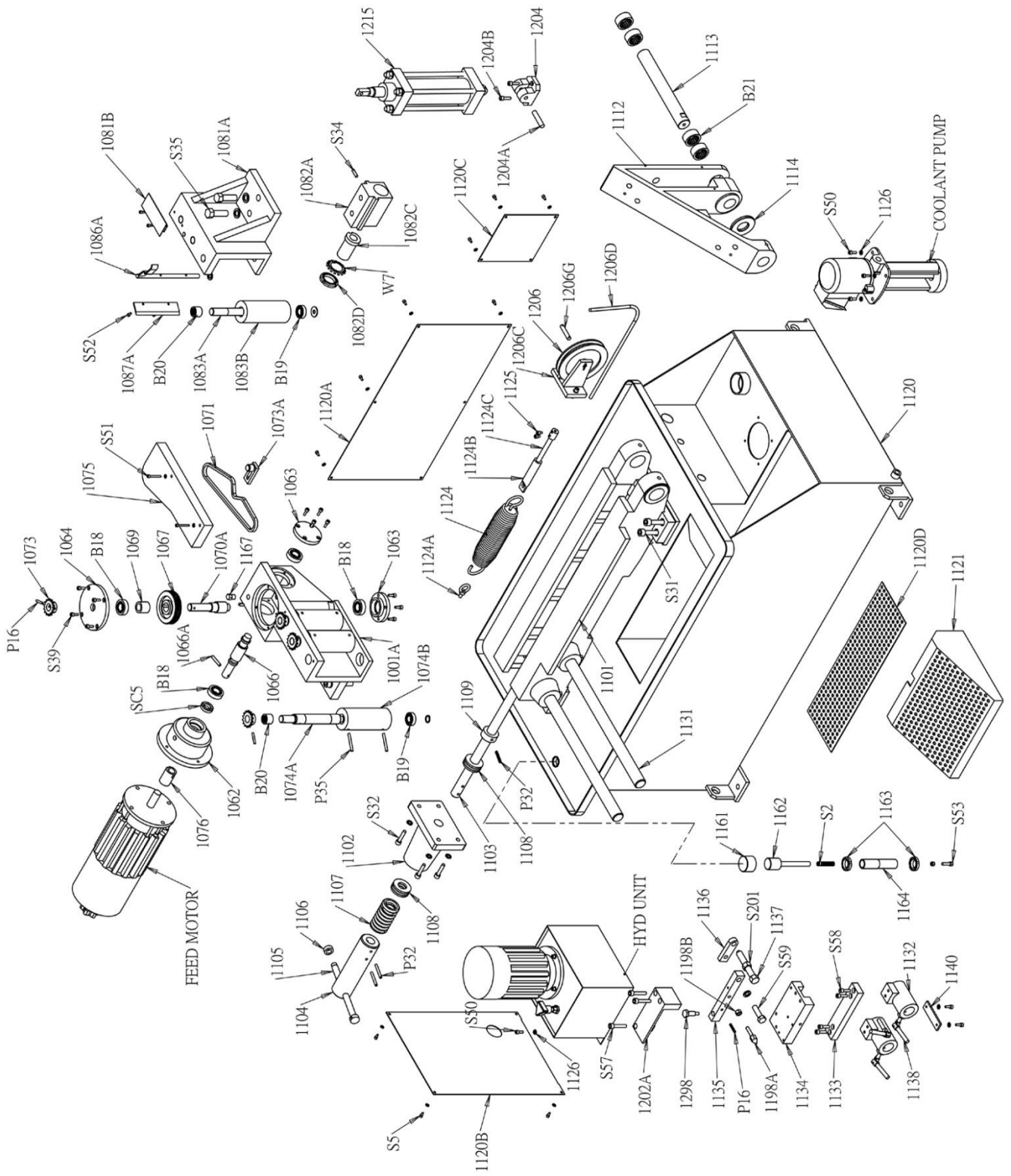
[www.jettools.com](http://www.jettools.com)

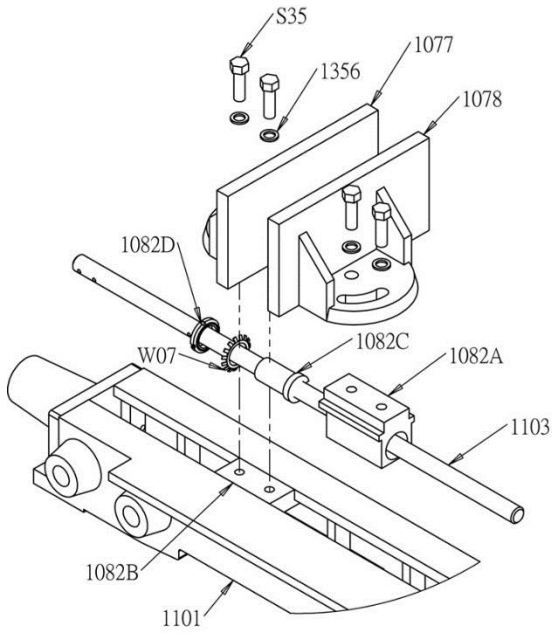
P-50000434T 2015/03/5



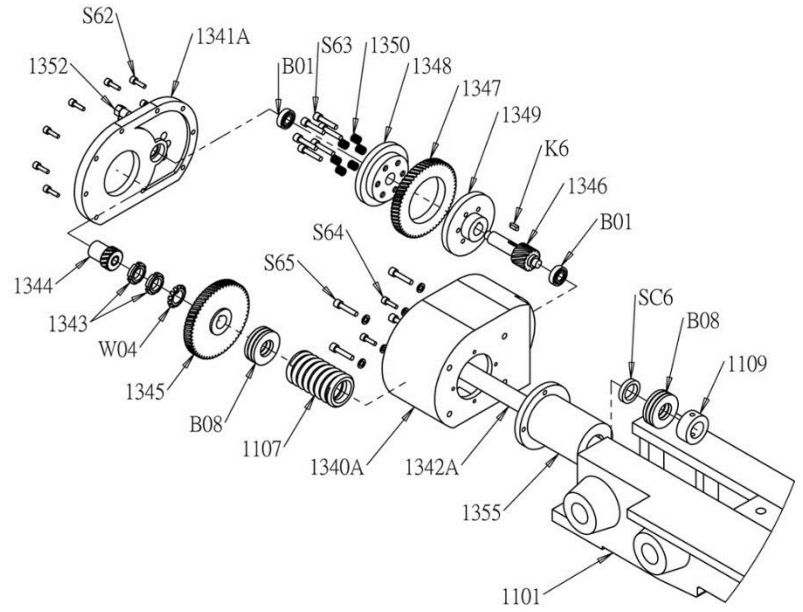
## REPLACEMENT PARTS

Ref. #	Q'ty	Description	Ref. #	Q'ty	Description
1001	1	Front blade wheel	1046	2	Top Carbide Guide
1002	1	Tension Block	1047	8	Disc Spring
1003	1	Shroud	1048	2	Carbide Guide Adjusting Screw
1004	1	Tension Screw	1049	2	Guide Adjusting Boss
1005	1	Driven Dog	1049 A	2	Pin 8 $\phi$ x 50L
1006	1	Thrust Bearing Housing	1050	2	Retaining Plate
1007	2	Guide Bar	1051	2	Studs
1008	1	Front Spindle	1052	2	Hand Wheel
1009	1	Hand Wheel	1111	1	Tension Frame
1010	6	Disc Spring	1115	1	Pivot Bracket
1011	1	Slide Seat	1116	1	Pin 12 $\phi$
1012	1	Lock Nut	1117	1	Left Blade Wheel Cover
1013	1	Lock Ring	1118	1	Right Blade Wheel Cover
1014	1	Spindle Cap	1119A	1	Wheel Cover
1015	3	Adjusting Screw	1119B	1	Pulley Cover
1016	1	Lock Nut (AN06)	1125	2	1/4"x20NLx1" Screw
1021	1	Input Pulley	1126	2	1/4" Washer
1022	1	Gear Box	1127	1	Bushes
1023	1	End Cap ( Right)	1128	1	Brush Housing
1024	1	End Cap ( Left )	1129	1	Brush Spindle
1025	1	Lower Cap	1141	1	Valve
1026	1	Worm	1170	1	Belt
1026 A	1	Lock Nut (AN05)	1171	1	Motor Pulley
1027	1	Worm Gear	1172A	1	Motor Seat
1029 A	1	Special Washer	1172B	1	Motor Base
1029 B	1	Nut ( AN07 )	1172C	1	Motor Base Plate
1029 S	1	Worm Shaft	1172D	1	Motor Seat
1029 V	1	Collar	1173B	2	Motor Base Sliding Linkage
1030	1	Rear Blade wheel	1174	1	Motor Base Adjusting Shaft
1031	1	Upper Cap	1175	1	Collar
1032	1	Plate	1190	1	Electrical Control Case
1041	1	Saw Frame	1191	4	1/4"x20NLx5/8" Screw
1042	1	Slide Way	1192	1	Counter
1043	2	Blade Guide Arm	1193	6	3/16"x24NLx3/8" Screw
1043A	1	Protective Cover	1194	1	Control Panel
1043 B	1	Protective Cover	1195	1	Feed Knob
1044	2	Locking Pieces	Motor	1	Motor 3Hp
1045	4	Carbide Guide	SOL	1	Solenoid Valve





**\* SA Type only**



**\* AA Type only**

## REPLACEMENT PARTS

Ref. #	Q'ty	Description	Ref. #	Q'ty	Description
1061A	1	Front Auto - Vice Bracket	1113	1	Pivot Shaft
1062	1	Worm Shaft Front Cap	1114	1	Angle Bracket Spacer
1063	2	Worm Shaft End Cap	1120	1	Base
1064	1	Worm Wheel Cap	1120A	1	Base Cover
1066	1	Worm Drive	1120B	1	Cylinder Cover
1066A	1	Pin 7 $\phi$ x40L	1120C	1	Base Cover
1067	1	Worm Wheel	1124	1	Compensation Spring
1069	1	Worm Wheel Spacer	1124A	1	Ring
1070A	1	Worm Wheel Shaft	1124B	1	1/2" Adjustment Nut
1071	1	Roller Chain	1124C	1	1/2" Adjustment Screw
1073	4	Plate Wheel	1125	1	1-1/4"x20NLx5/8" Screw
1073A	4	Idler Seat	1126	1	1/4" Washer
1074A	3	Front Auto -Vice Roller Shaft	1131	2	Bar Guide Shaft
1074B	3	Front Auto - Vice Roller	1132	2	Auto Bar Stop Boss
1075	3	Plate Wheel Cover	1133	1	Boss Link Bar
1076	3	Driving Sleeve	1134	1	Auto Bar Stop Body
1077	1	Front Vice Bracket	1135	1	Stop Block
1078	1	Rear Vice Bracket	1136	1	Extension Bar
1081A	1	Rear Auto - Vice Bracket	1137	1	Trip Arm Adjuster
1081B	3	Limit Switch Cover	1138	3	Small Clamp Screw
1082 A	1	Vice Screw Housing	1140	1	Plate
1082 B	1	Vice Seat	1148	1	Stopper Seat
1082 C	1	Lead Screw Nut	1148 A	1	Stopper
1082 D	1	Lock Nut (AN07)	1149	1	Screw 5/16"x1 1/2"
1083 A	3	Rear Auto -Vice Roller Shaft	1161	1	Cap
1083 B	3	Rear Auto - Vice Roller	1162	1	Plunger
1086 A	1	Feed trip Lever Spindle	1163	2	Lock Nut (AN05)
1087A	1	Limit Switch Shield	1164	1	Special Adjusting Screw
1101	1	Viceway	1165	1	Spring
1102	1	Shaft Seat	1167	2	1/4 PT Filling Plug
1103	1	Vice Screw	1198	1	Trip Arm Pivot Pin
1104	1	Vice Screw Extension	1198A	1	Switch Stopper
1105	1	Handle Shaft	1198B	1	3/8" Nut
1106	2	Handle Retainer	1202A	1	Stop Block
1107	1	Spring	1204	1	Cylinder Base
1109	1	Vice Screw Collar	1204A	1	Pin 12 $\phi$ x50L
1112	1	Angle Bracket	1204B	2	5/16"x18NLx1" Screw

## REPLACEMENT PARTS

Ref. #	Q'ty	Description	Ref. #	Q'ty	Description
1206	1	Roller	1347	1	Clutch Gear
1206C	1	Roller Base	1348	1	Clutch Plate ( moveable)
1206D	1	Cable Wire	1349	1	Clutch Plate ( fixed )
1206G	1	Roller Shaft	1350	1	Clutch Spring
1215	1	Cylinder	1352	1	Cap Screw
1340A	1	Gear Box	1355	1	Spring Sleeve
1341A	1	Gear Box Cap	1356	4	Washer
1342A	1	Vice Lead Screw	WB1	1	Wire Brush
1343	1	Gear Setting Nut	Pump	1	Coolant Pump
1344	1	Motor Gear	Motor	1	Feed Motor
1345	1	Leadscrew Gear	HYD	1	HYD UNIT
1346	1	Middle Gear			

## REPLACEMENT PARTS

Ref. #	Q'ty	Description	Ref. #	Q'ty	Description
B01	2	Bearing 6001	S 27	6	Screw 3/8" x 1 1/4"
B06	2	Bearing Ball 1/4"	S 28	2	Screw 5/16" x 5/8"
B08	1	Trust Bearing 2905	S 29	4	Screw 5/32" x 3/8"
B11	2	Taper Bearing 30206	S 31	4	Screw 1/2" x 1 1/2"
B12	2	Thrust Bearing	S 32	4	3/8"x16NLx1-1/4" Screw
B15	2	Bearing 30208	S 33	2	Screw 5/16"x 1 1/4"
B16	2	Bearing 30206	S 34	1	Screw 5/16" x 5/8"
B18	4	Ball Bearing 6004	S 35	4	Screw 5/8" x 4"
B19	6	Ball Bearing 6003	S 39	12	1/4"x20NLx5/8" Screw
B20	6	Needle Roller Bearing TA2020	S 43	3	5/16"x18NLx1-1/4" Screw
B21	4	Needle Roller Bearing TA3520	S 47	2	1/4"x20x3/8" Screw
K 1	1	Key 8 x 8 x 35L	S 48	4	Screw 3/8" x 1"
K 2	1	Key 8 x 8 x 35L	S 49	4	Screw 5/16" x 1 1/2"
K 3	1	Key 7 x 7 x 50L	S 50	6	1/4"x20NLx5/8" Screw
K 6	1	Key 5 x 5 x 15L	S 51	2	3/16"x24NLx1-1/2" Screw
P 16	1	Spring Pin 5 ¢ x 30L	S 52	2	5/32"x32NLx3/8" Screw
P 17	1	Spring Pin 5 ¢ x 40L	S 53	1	Screw 1/4" x 1 1/4"
P 22	2	Spring Pin 5 ¢ x 40L	S 54	2	1/2" Lock Nuts
P 24	2	Spring Pin 5 ¢ x 30L	S 55	3	Screw
P 26	2	Spring Pin 6 ¢ x 40L	S 57	3	Screw 5/16" x 1 1/2"
P 32	1	Spring Pin 6 ¢ x 55L	S 58	2	Screw 5/16" x 1"
P 35	6	Spring Pin 6 ¢ x 40L	S 59	1	Screw 1/2" x 1"
R 1	1	Retaining Ring	S 62	6	Screw 1/4" x 3/4"
S 1	4	Screw 5/16" x 1"	S 63	6	Screw 5/16" x 1 1/4"
S 2	1	Screw 1/4" x 3/4"	S 64	4	Screw 1/4" x 5/8"
S 4	8	3/16"x24NLx3/8" Screw	S 65	4	Screw 5/16" x 1-1/4"
S 5	5	3/16"x24NLx3/8" Screw	S 70	4	5/8"x11NLx2" Screw
S 6	6	Screw 5/16" x 3/4"	S 246	2	Elbow
S 7	3	Screw 1/2" x 3 1/2"	S 247	2	Coolant Flow Switch
S 8	1	1/4" x 5/8" Screw	W 04	1	Check Washer
S 17	2	Screw 5/16" x 5/8"	W 05	1	Check Washer
S 20	6	Screw 3/8" x 1 3/4"	W 06	1	Check Washer
S 21	6	Screw 1/4" x 5/8"	W 07	1	Check Washer
S 22	6	Screw 5/16" x 1"	SC1	1	OIL SEAL TC 30 x 45 x 8
S 23	6	Screw 1/4" x 3/4"	SC2	1	OIL SEAL TC 50 x 72 x 12
S 25	8	Screw 5/16" x 1 1/2"	SC5	1	Oil Seal 20.35.7
S 26	6	Screw 1/4" x 3/4"	SC6	1	OIL SEAL TC 25 x 35 x 8